



# TROPICAL STORM SURIGAE (BISING) UPDATE - 01

## PHILIPPINE SEA

## FORECASTED TYPHOON TRACK

AS OF 18 APRIL 2021, AT 2000 HRS UTC  
(0300 HRS ICT on 19 APRIL, 2021)

COUNTRIES TO BE AFFECTED  
PHILIPPINES

### CURRENT LOCATION

LATITUDE: 14.1°N – LONGITUDE: 126.5°E

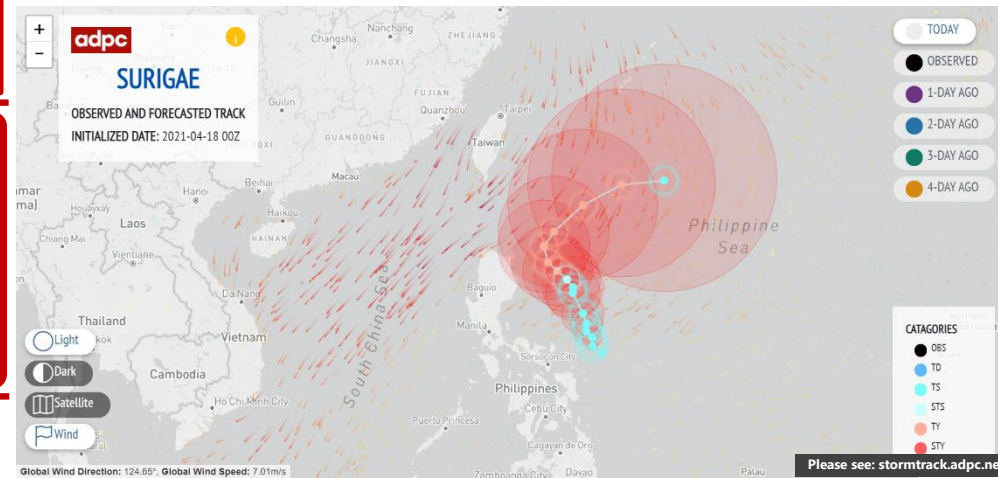
CENTER OF TROPICAL STORM " SURIGAE (BISING)"  
LOCATED 250 KM EAST NORTHEAST OF VIRAC,  
CATANDUANES

### CURRENT STORM CLASSIFICATION

TYPHOON

CURRENT MAX WIND SPEED  
195 KM/H AT CENTER AND GUSTINESS OF  
UP TO 240 KM/H

LANDFALL FORECAST  
NOT SPECIFIED BASED ON CURRENT TRACK



## SITUATION OVERVIEW

The center of Super Typhoon "SURIGAE (BISING)" is forecasted to move generally northward or north northwestward until Wednesday evening or Thursday early morning. Afterwards, the typhoon will move northeastward throughout Thursday and east northeastward on Friday away from the landmass of Luzon. It is likely to maintain its current intensity in the next 12 to 24 hours before gradually weakening throughout the remainder of the forecast period.

## ASSOCIATED HAZARDS

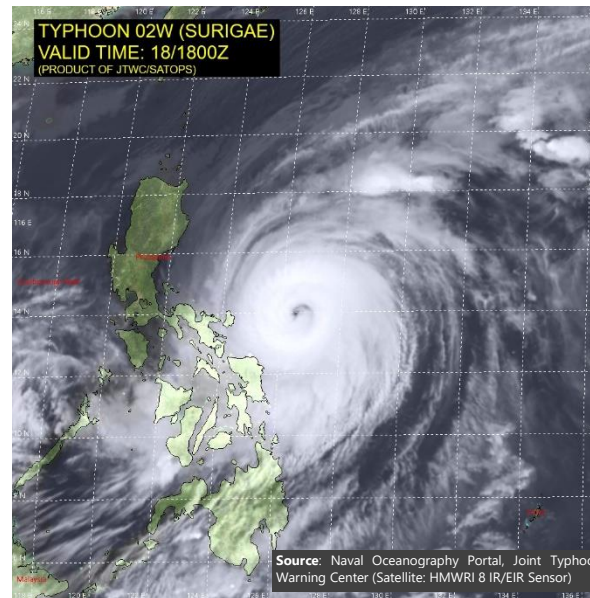
**STRONG WIND:** Tropical cyclone winds of at least strong breeze to near gale in strength extend outward up to 440 km from the center of the typhoon. Destructive typhoon-force winds extend outward up to 110 km from the center of the typhoon. In the next 24 hours, the northeasterly wind flow enhanced by the typhoon will also bring strong breeze to near gale conditions with higher gusts over most of Northern Luzon, Aurora, and the rest of Quezon

**HEAVY RAIN:** Today, moderate to heavy with at times intense rains will be experienced over Bicol Region, Northern Samar, Samar, Eastern Samar, Biliran, and Leyte. Tomorrow (20 April), moderate to heavy rains will be experienced over Bicol Region and Northern Samar

**SEA CONDITIONS:** Very rough to very high seas will be experienced over the eastern seaboard of Luzon (5.0 to 12.0 m) and rough to very high seas over the northern and eastern seaboard of Eastern Visayas (2.5 to 7.0 m).

## DISCLAIMER

Tropical Storm update is for information purpose only for ADPC staff and not to be used for any forecast and warning purpose. Information compiled for this update is sourced from PAGASA Bulletin #11 and Joint Typhoon Warning Center, Super Typhoon 02W (Surigae) Warning #22.



## FORECAST PATH

- 24 Hour (Tomorrow morning): 300 km Northeast of Virac, Catanduanes or 510 km East of Baler, Aurora (15.4°N, 126.3°E)
- 48 Hour (Wednesday morning): 430 km East of Tuguegarao City, Cagayan (16.9°N, 125.7°E)
- 72 Hour (Thursday morning): 405 km East of Calayan, Cagayan (19.0°N, 125.3°E)

## ACTIONS

Based on the current forecast scenario, TCWS #2 remains the highest level of wind signal that will be hoisted due to this typhoon. Disaster preparedness agencies / organizations are in action to alert their communities.

## ANTICIPATED IMPACTS

- Mariners of small sea crafts are advised not to venture out over these waters.
- Flooding (including flashfloods) and rain-induced landslides are increasingly likely to occur especially in areas highly or very highly susceptible to these hazards.
- Light to Moderate damage to high risk structures.
- Rice and corn may be adversely affected and considerable damage likely to some heavy-foliaged trees.
- In general, the winds may bring light to moderate damage to the exposed communities.
- The general public especially people travelling by sea and air are cautioned to avoid unnecessary risks.



CLIMATE RESILIENCE DEPARTMENT

Source: Update generated at ADPC HQ Bangkok  
Time: 0830 HRS (ICT) | Date: 19<sup>th</sup> April, 2021